



Sheffield City Hall

# Oval Hall Tech Spec

## **Events Coordination**

**Office:** 01142 233739

**Email:** [production@sheffieldcityhall.co.uk](mailto:production@sheffieldcityhall.co.uk)

## **Technical Manager**

**Matt Sheridan**

**Office:** 01142 233735

**Mobile:** 07557 747641

**Email:** [matthew.sheridan@sheffieldcitytrust.org](mailto:matthew.sheridan@sheffieldcitytrust.org)

## **Business Development Manager**

**Kerrie Shakeshaft**

**Mobile:** 07584504573

**Email:** [kerrie.shakeshaft@sheffieldcitytrust.org](mailto:kerrie.shakeshaft@sheffieldcitytrust.org)

## **Venue Manager**

**Andy Bridger**

**Mobile:** 07739945927

**Email:** [andy.bridger@sheffieldcitytrust.org](mailto:andy.bridger@sheffieldcitytrust.org)

## **Ticketing and Sales updates**

**Email:** [ticketing@sheffieldcityhall.co.uk](mailto:ticketing@sheffieldcityhall.co.uk)

## **Food and Beverage**

**Gareth Powell**

**Mobile:** 07921474608

**Email:** [gareth.powell@sheffieldcitytrust.org](mailto:gareth.powell@sheffieldcitytrust.org)

# Index

Seating Capacities (Holds and Kills)

Stage Dimensions (inc. Access)

Mother Grid and Rigging

Lighting (inc. House Lights, focusing)

Stage Lighting and Control

Power

Standard Rig (inc. Fixture List & Patch)

Additional Information (inc. Lasers & Pyrotechnics,  
Comms, PA)

FAQ's

# Seating Capacities

## Capacity (before any kills)

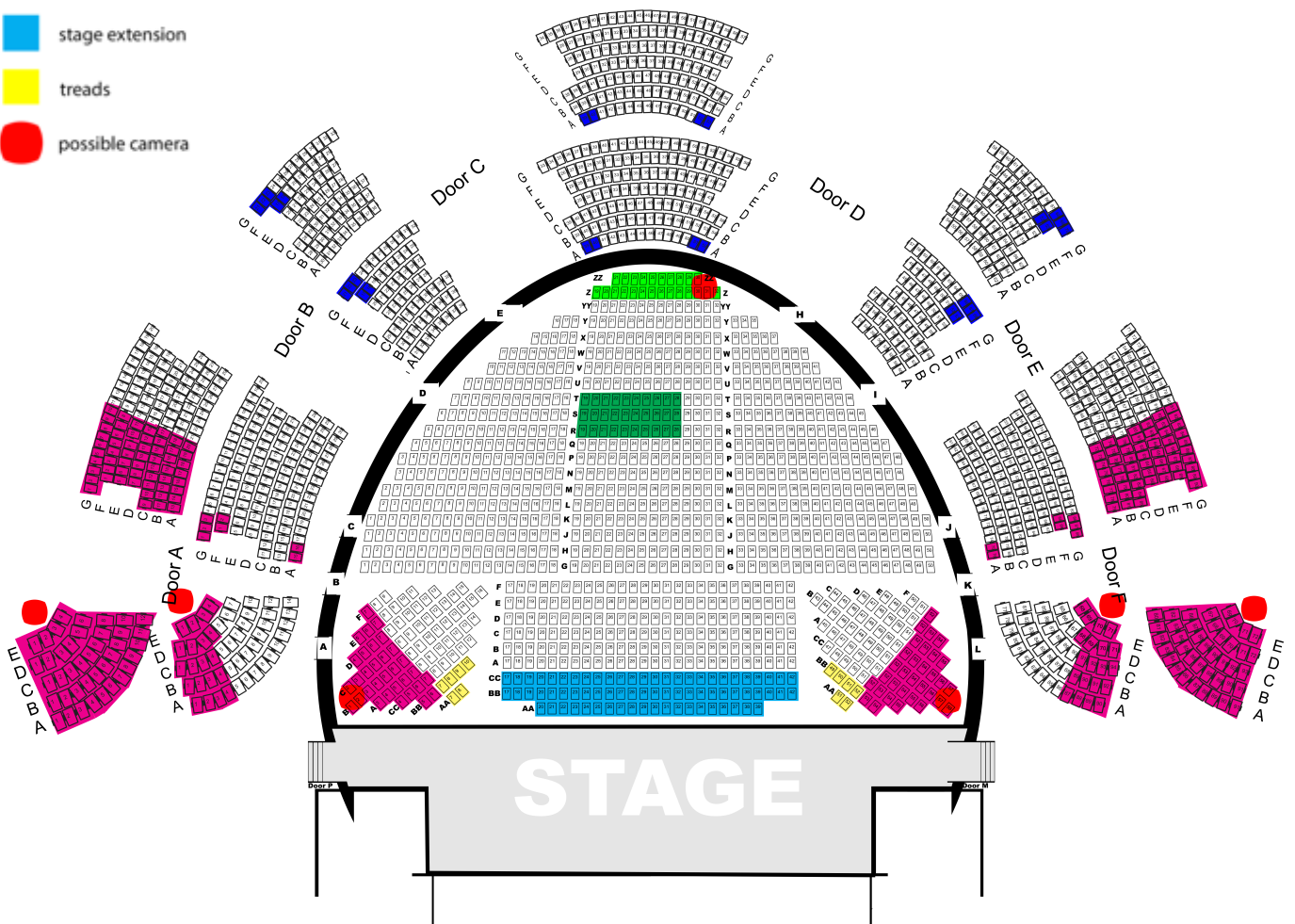
Up To 2271 Theatre Style

Stalls 1118

Circle 575

Balcony 578

- restricted view general sale
- restricted view - hold
- z-zz mix position
- rst mix position
- stage extension
- treads
- possible camera



Green Z&ZZ are standard comedy mix position kills – 6.2m x 1.7m (24seats)

Olive RST 19-28 are standard band mix position kills – 5m x 2.5m (30 seats)

Purple and Navy are reduced visibility (Navy go on general sale)

Light Blue are stage extension (72 seats)

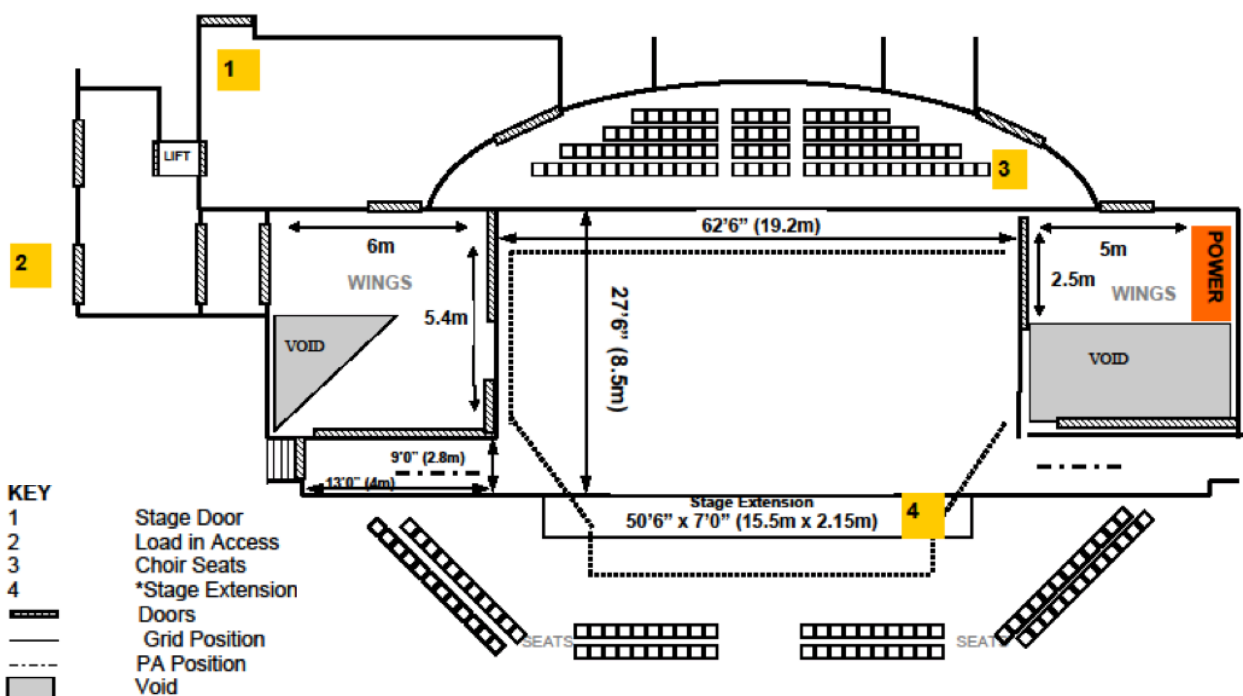
Yellow are FOH treads (always held until instructed otherwise) (12 seats)

Red are usual camera positions. (10 seats)

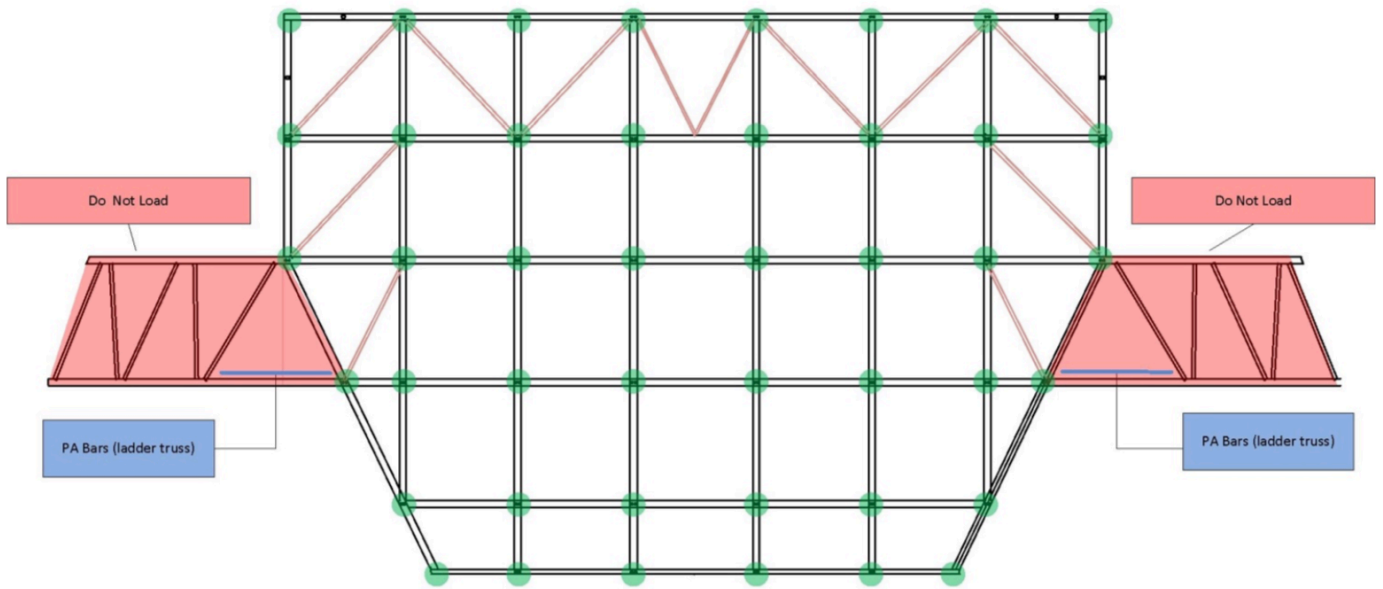
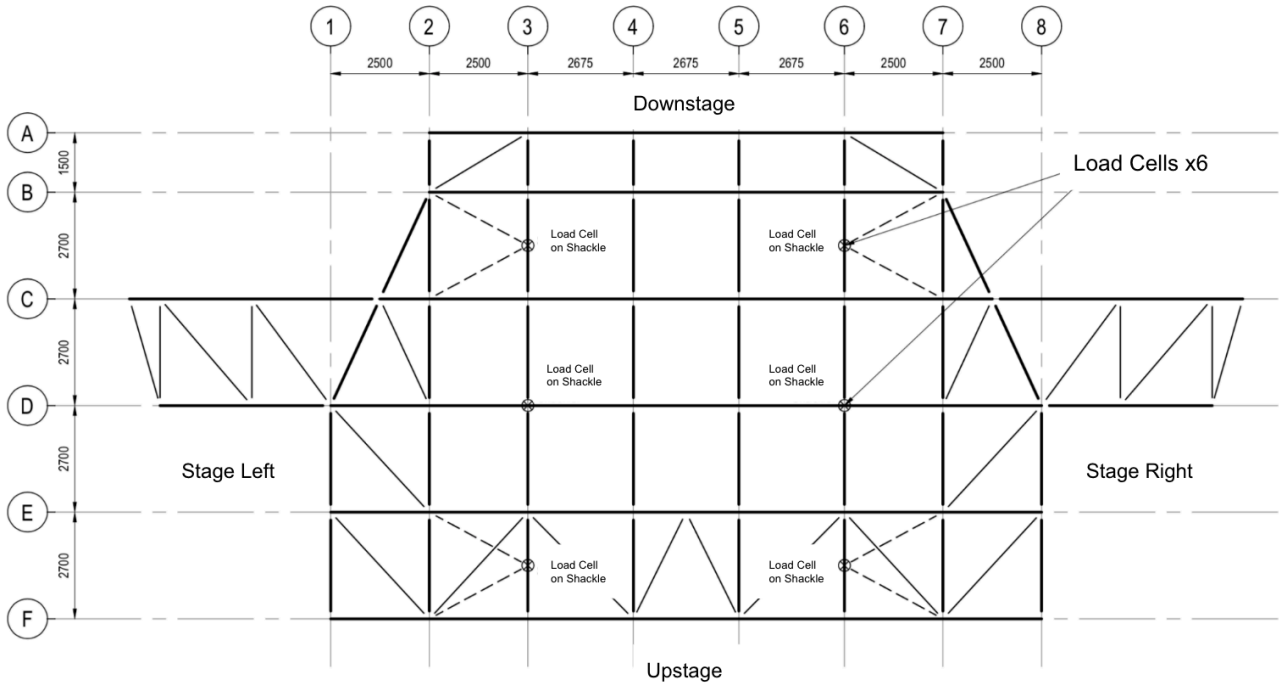
If house tabs (with pros arch) are required, standard sight lines will change resulting in further kills.

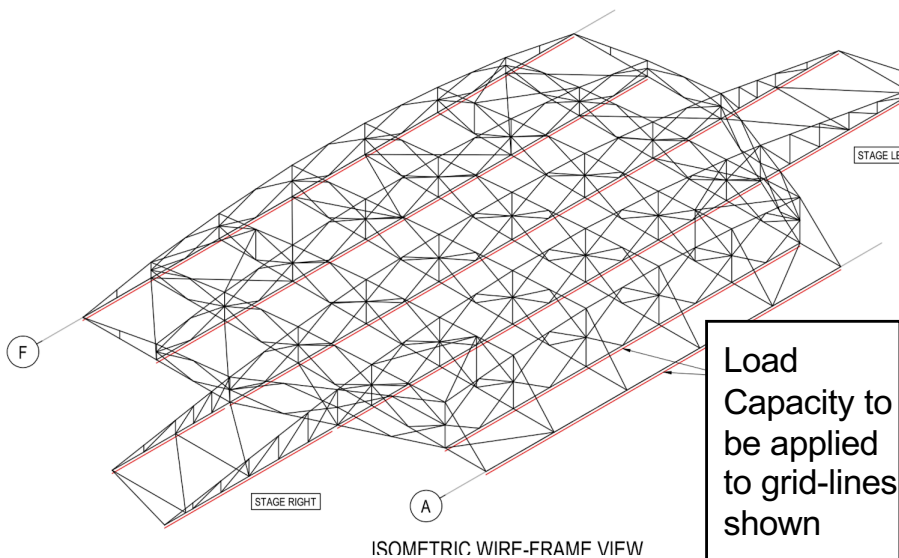
# Stage

- Stage Dimensions: 19m x 8.5m (60'6" x 27'6")
- Height of Stage: 1020mm (40")
- Stage Extension: 15.5m x 2.15m (50'6" x 7'0")
- Please note that the stage extension must be requested before the show goes on sale
- PA Wings: 4m x 2.8m (13'. 00" x 9.'00")
- Open Stage / No Iron
- Stage Load Limit: 5kn/m2 (104lb/ft2)
- Blacks and False Pros if required (Pros may result in Kills)
- Cable run from power to stage right – 30 metres
- Access direct from street. The smallest part of load in access is 1790mm x 2040m.



# Mother Grid





APPLIED LOAD CAPACITY ALLOWANCE	
GRIDLINE	Max.
A (FRONT)	1,000 kg *
B	1,200 kg *
C	1,500 kg
D	2,000 kg
E	2,000 kg
F (REAR)	2,000 kg
Cantilever Left	150 kg
Cantilever Right	150 kg
TOTAL	10,000 kg

### Notes

1. Load Capacity shown are applied loads, evenly distributed on grid-line.
2. All applied loads should be left-right symmetrical.
3. Load Capacity is based on maximum hoist capacity of 3200kg (SWL).
4. Load Capacity allows for self-weight of lighting grid, lifting beams and scaffold tubes arranged directly under gridlines (approx. 4000kg total).
5. Any additional support structures will need to be accounted for out of the maximum capacity allowance.
6. No individual load is to exceed 1000kg and should be placed on a node position (where two grid lines intersect).
7. Loads between nodes should not exceed 300kg and should be divided between the load capacity of the adjacent nodes.
8. Half the load capacity from gridlines A and/or B may be removed and added to gridlines C to F if required. 12.2m (39'. 00") clearance at trim height. Grid can be lowered to 1.8m above stage. Please note that a lower grid height for the show may affect sight lines to circle and balcony.
9. The overall maximum applied load capacity of the lighting grid is 10,000kg (i.e., a uniformly distributed applied load of 10 tonnes).
10. The arrangement for how this maximum load is to be distributed is split into gridlines, working from the front of the stage (audience side) towards the back of the stage.
11. The applied load should be uniformly distributed left-right symmetrically placed along the gridlines.
12. The applied load is to be fixed to the lighting rig at node points (i.e., intersections of truss members).
13. The typical applied load distribution is as shown in the 'Applied Load Capacity Allowance' table (above).
14. Any points on the FRONT LINE of the stage (i.e. PA), need secondary safeties UNLESS: the load is 50% or less than the SWL of the rigging and the motor.
15. Any truss over the audience head's needs secondary safeties UNLESS: the truss has three motors, but the load lifted could safely be taken by two OR the truss is being lifted by Lodestar D8+ motors.
16. Touring Riggers MUST be NRC. We reserve the right to source our own if we do not trust yours.

# Lighting

## House Lights

- Our House Lights are not DMX controlled.
- House lighting is operated by remote from either SR, SL or FOH position at levels of 30%, 50%, 75% or FF.

Our controller uses a pre-programmed 5-second fade time for all cues.

## Focusing

- We have no way of focusing overhead lighting without a climbing rigger, as the trim height is 12 metres. We can bounce focus, but this can only be done *before* PA is flown.

## Control

- ETC ION 1024 with x2 20-fader wing

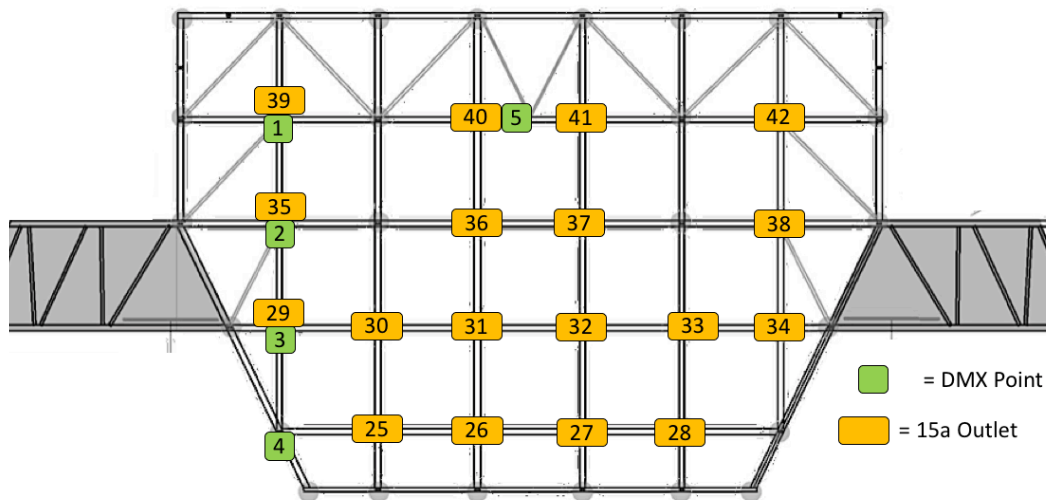
## Lantern Stock and Standard Rig

We are currently in the process of updating our lantern stock, which provides our Standard Rig.

Once stock, and relevant patch information, have been finalised, we will update you accordingly.

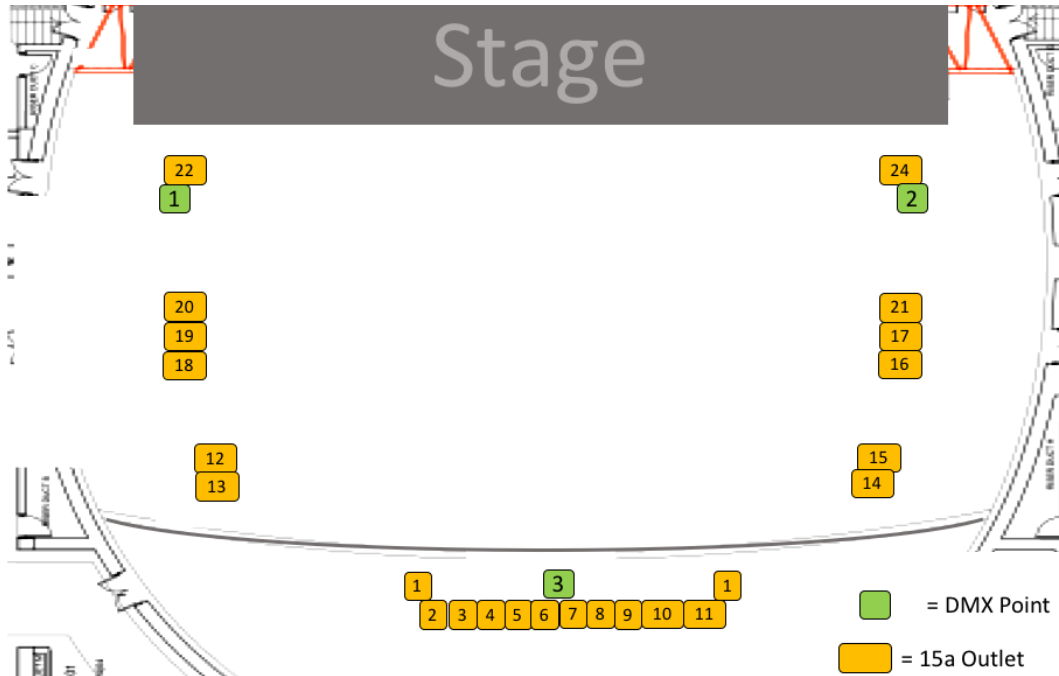
# Stage Lighting and Control

## Mother Grid



- \* 18 Channels of Dim/Non Dim (rated at 10Amps per Channel)
- \* 5 Lines of DMX (across 2 universes)
- \* Patching from mix positions and Stage Right

## FOH



- \* 24 Channels of Dim/Non Dim (rated at 10Amps per Channel)
- \* 3 Lines of DMX (Across 1 universe)
- \* Patching from mix positions and Stage Right



# Power

## **Lighting (Up Stage Left)**

- Tails - 400 amps 3Ø, Power lock neutral + earth
- Ceeform - 63a 3Ø, 32a 3Ø, 63a single.

## **Sound (Up Stage Left)**

- Tails 200 amps 3Ø, neutral + earth maximum.
- Ceeform - 125 3Ø, 63a 3Ø, 32a 3Ø, 32 singleØ.

## **Motors (Up Stage Left and Up Stage Right)**

- 32 amps 3Ø, Ceeform
- If you require a cable run from Stage Left to Stage Right, you must be touring at least 30 metres of powerlock/ceeform.

If you require a cable run, and are not touring sufficient length of cable, please contact us as soon as possible so cable can be hired in to meet your requirements.

## **Bus (Shore Power)**

- 3x 16A 1Ø Ceeform (*right hand side of stage door*)

# Additional Information

## **Multicore Trap Run**

- 50m minimum for both sound and lights.
- 20m direct distance from stage to mixer and lighting desk position

## **Lasers and Pyro Effects**

- Full list of those intended for use to be submitted at least 21 days prior to event for licensing approval.

## **Sound**

- Please note: we do not have an in-house system or any delays, although we have a local preferred supplier that we can contact on your behalf.

## **Comms**

- We can provide comms at mix positions, either side of the stage and follow spot op positions. We have 7 wired comms sets available in total.

## **Show relay**

- This can be made available to dressing rooms at request.

## **Announcements**

- Backstage announcements can only be made from Stage Door. Please speak to Stage Door on arrival if this is required.

# Images

With Black box and Pros Arch. Without Stage Extension.



Without Black box, Pros Arch and stage extension



With Stage Extension. Without Black Box and Pros Arch



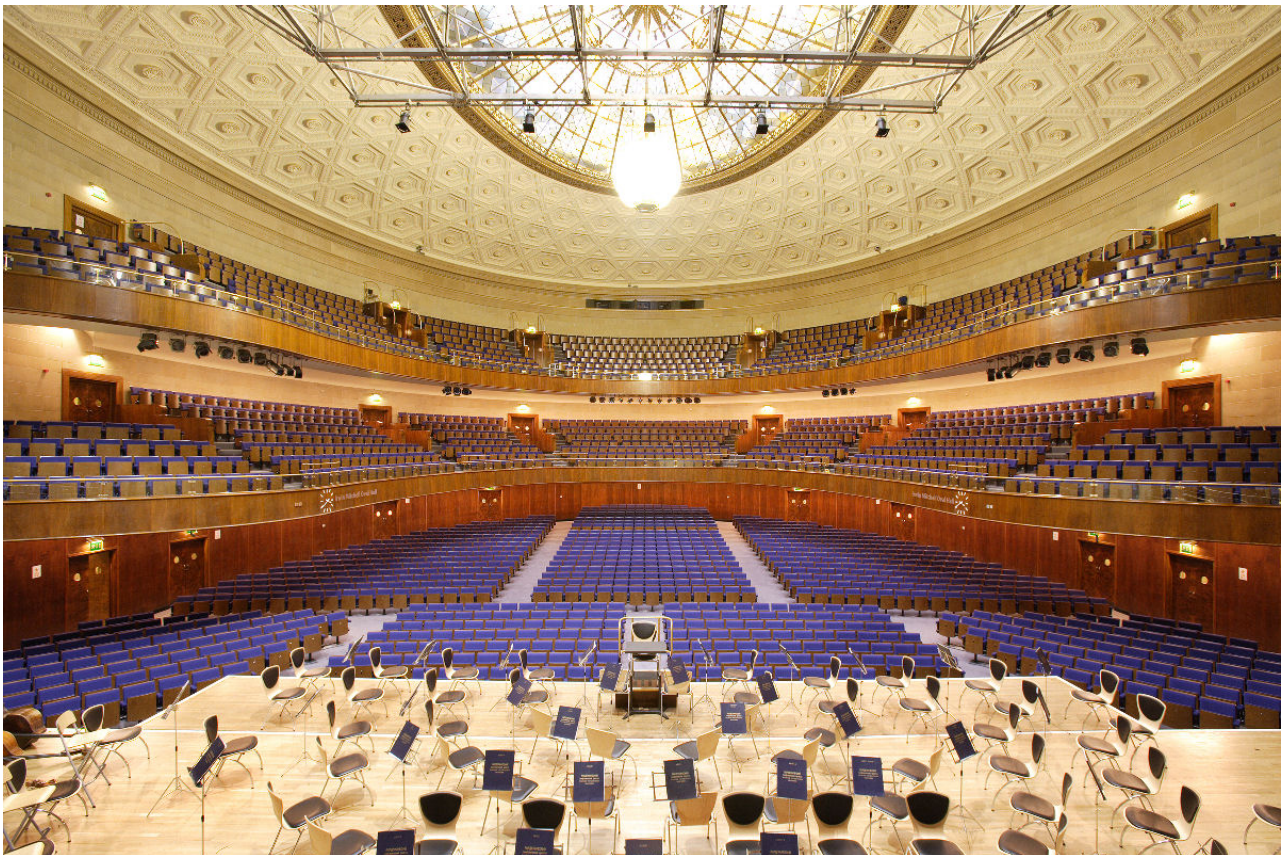
With (Standard) Black Box and Treads.  
Without Pros Arch and Stage Extension



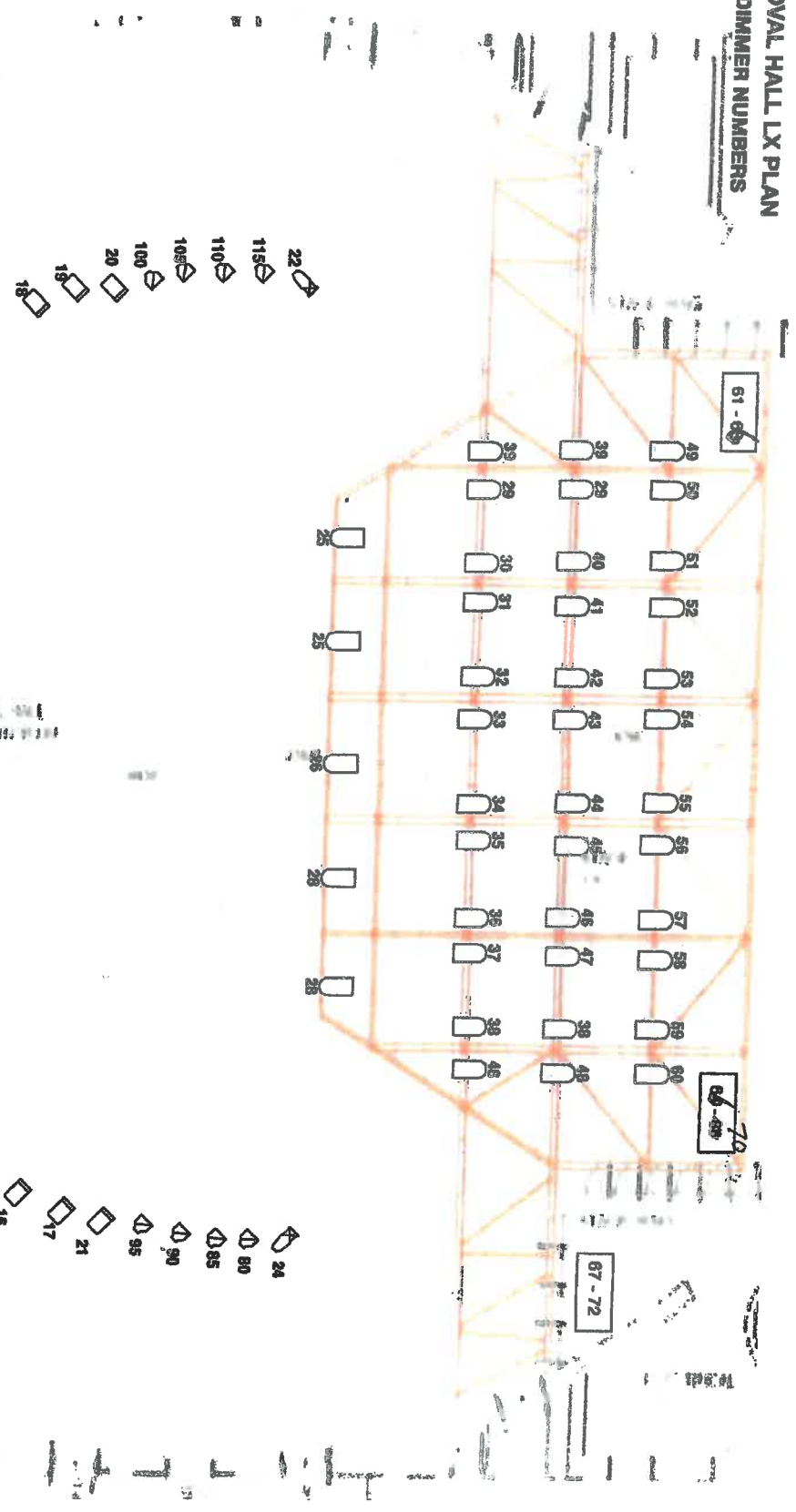
## Tiered Seating



## Auditorium from Stage



**OVAL HALL LX PLAN  
DIMMER NUMBERS**

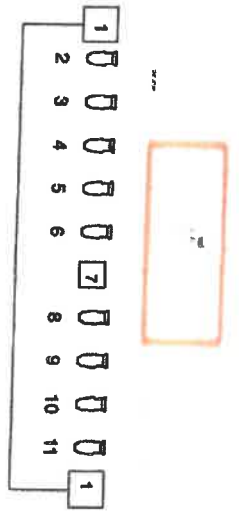


- 22
- 115
- 110
- 105
- 100
- 20
- 19
- 18

- 12
- 13

- 24
- 80
- 85
- 90
- 95
- 21
- 17
- 16

- 14
- 15



Key	
	18" Source Four
	15-50" Source Four Zoom
	ETC Colour Source Par
	9" Fres
	Channel
	Par4x8
	Socket